

# SAM 2016

Chengdu  
China  
中国·成都



# Conference Committee

## **General Chairs:**

**Rick S. Blum**

Lehigh University, USA

**Qian He**

UESTC, China

## **Technical Chairs:**

**Jian Li**

Univ of Florida, USA

**Antonio De Maio**

Univ of Naples Federico II, Italy

**Hongbin Li**

Stevens Inst of Tech, USA

## **Finance Chairs:**

**Pu Wang**

Schlumberger-Doll Research, USA

**Huiyong Li**

UESTC, China

## **Publications Chairs:**

**Ruixin Niu**

Virginia Commonwealth Univ, USA

**Xiufeng Song**

LSI Corporation, USA

## **Local Chairs:**

**Jun Fang**

UESTC, China

**Kai Kang**

UESTC, China

**Ying Zhang**

UESTC, China

**Conference Management Group:** University of Electronic Science and Technology of China (UESTC)



**电子科技大学**  
University of Electronic Science and Technology of China

# Location - History

*First SAM in Asia!*



- SAM 2014: Coruna, Spain
- SAM 2012: Hoboken, NJ, USA
- SAM 2010: Jerusalem, Israel
- SAM 2008: Darmstadt, Germany
- SAM 2006: Waltham, MA, USA
- SAM 2004: Sitges, Spain
- SAM 2002: Rosslyn, VA, USA
- SAM 2000: Cambridge, MA, USA

# Location - Chengdu



Chengdu, the capital city of Sichuan province, is a genuine Heavenly State where boasts endless splendid views, delicious delicacies and Chinese beauties.



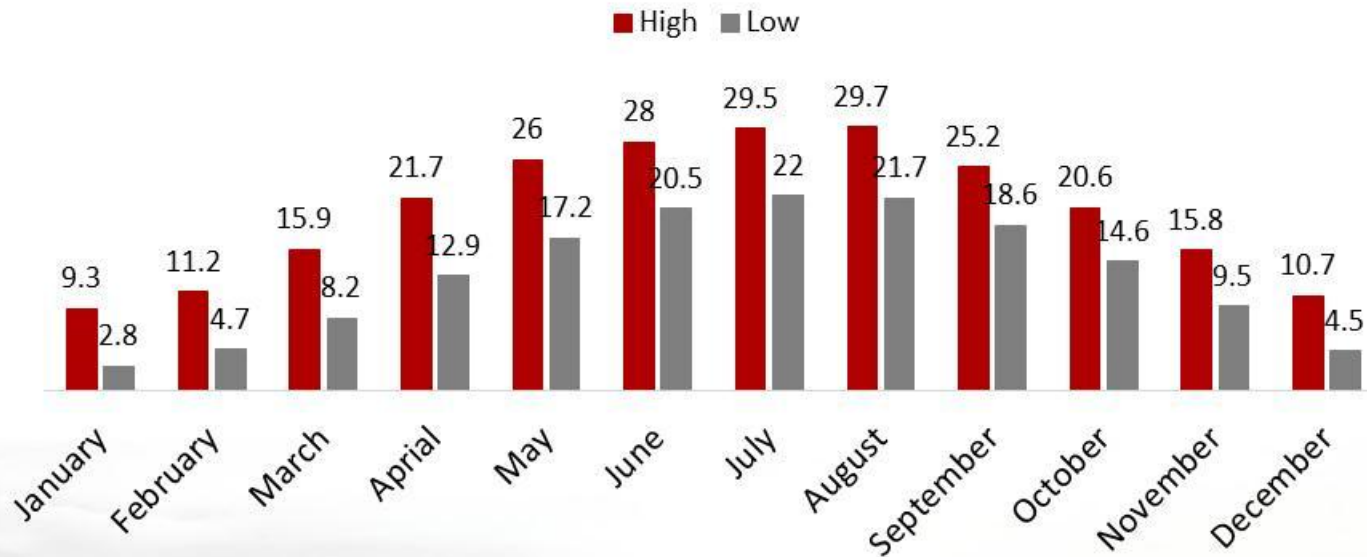
- An ancient and abundant city with profound Bashu culture. Giant Panda and Shu Embroidery have been the labels of Chengdu. A perfect combination of classic and modern elements.



# Chengdu Weather

- Mild all year round - annual mean 16°C (61°F)
- Warm in June: 20°C (68°F) to 28°C (82°F)

Average temperatures in °C



# Venue - Minshan Hotel

- Minshan Hotel, enjoying a history of 24 years, is located in the city center.
- 383 luxurious and comfortable guest rooms and suites.
- Has its own cafeteria, Chinese restaurant and full-view Western-style restaurant.



- Entertainment facilities such as tea house, hair salon, fitness center, SPA and Minshan Cabaret and Karaoke.
- Close to Funan River, Tianfu Square, Sichuan Museum of Science, Renmin Park, Chengdu Stadium, Marquis Wu Temple etc.

# Venue - Minshan Hotel

- Over 1600 square meter of meeting space.
- Multiple meeting rooms.
- Professional meeting facilities



- 25 minutes away from CTU international airport by bus.
- 2 minutes walking distance to the airport shuttle station.
- 5 minutes walking distance to the subway station.

# Transportation - CTU Airport

- Chengdu Shuangliu (CTU) International Airport is among world's top 50 busiest airport.
- Largest airport in central and western China.
- One of the three major hubs for Air China.
- 222 airlines, including 71 international airlines.



- 16km southwest to the center of Chengdu.
- Bus and taxi to downtown Chengdu.





# Transportation - Flight Info

## CTU – NORTH AMERICA

LOS ANGELES	14 hours	\$ 922
VANCOUVER	16 hours	\$ 961
SAN FRANCISCO	17 hours	\$ 832
NEW YORK	19.5 hours	\$ 1004
ANCHORAGE	21.5 hours	\$ 1779

## CTU – EUROPE

AMSTERDAM	10 hours	\$ 1848
FRANKFURT	10 hours	\$ 1671
LONDON	13.5 hours	\$ 1571
PARIS	16 hours	\$ 1709
MADRID	16 hours	\$ 1876
MILAN	14 hours	\$ 1676
VIENNA	19 hours	\$ 920
BRUSSELS	15 hours	\$ 914
COLOGNE	20 hours	\$ 1290
WARSAW	19 hours	\$ 904

## CTU – ASIA

BEIJING	2.5 hours	\$ 263
SHANGHAI	2.5 hours	\$ 212
GUANGZHOU	2.5 hours	\$ 176
HONG KONG	2.5 hours	\$ 205
TAIPEI	6 hours	\$ 292
SINGAPORE	8 hours	\$ 209
SEOUL	12 hours	\$ 315
TOKYO	12 hours	\$ 302
JAKARTA	10 hours	\$ 403
KUALA LUMPUR	8 hours	\$ 292
NEW DELHI	12 hours	\$ 394

## CTU – AUSTRALIA

SYDNEY	20 hours	\$ 592
MELBOURNE	17 hours	\$ 439

# Transportation - Local Transportation



## **Metro**

Accessible to the city's East Railway Station, West Railway Station and CTU airport.

## **Bus Rapid Transit (BRT)**

BRT vehicles circulate around the two innermost lanes of the roadway, one for each direction. Low cost, high degree of flexibility.

## **High-speed Railway**

Average speed: 180 km/h  
41 minutes to Qincheng Mountain.



# Accommodation

Hotel (within 1km)	Price
Sofitel Wanda Chengdu Hotel ★★★★★	\$125
Jinjiang Hotel ★★★★★	\$222
Somerset Serviced Residence ★★★★★	\$100
Minyoung Suniya Hotel ★★★★★	\$110
Jinjiang Generation Commercial Hotel ★★★★★	\$53
Jin Yuan Lou Hotel ★★★	\$78
Renheng Fraser Suites ★★★★★	\$143
Dacheng Hotel ★★★★★	\$31



# Local Attraction



Chengdu Giant Panda Breeding Research Base



# Local Attraction

## Temple of Marquis Wu

Temple of Marquis Wu is the most influential museum of Three-Kingdom relics in China. It was built in the Western Jin period (265–316) in the honor of Zhuge Liang, the famous military and political strategist who was Prime Minister of the Shu Han State during the Three Kingdoms period (220–280).



## Jinli Old Street

Jinli Street featuring the folklore of western Sichuan is internally guided by Three Kingdom culture. This street is an ideal place for tourists to enjoy food, buy antiques, Shu embroidery, bamboo weaving, folk handicrafts, and appreciate Sichuan opera, etc.

# Local Attraction



## Qingcheng Mountain

Qingcheng Mountain is the headstream of Chinese Taoism. It is famous for its beauty and quietness.

道 Taoism

## Dujiangyan Irrigation Water System

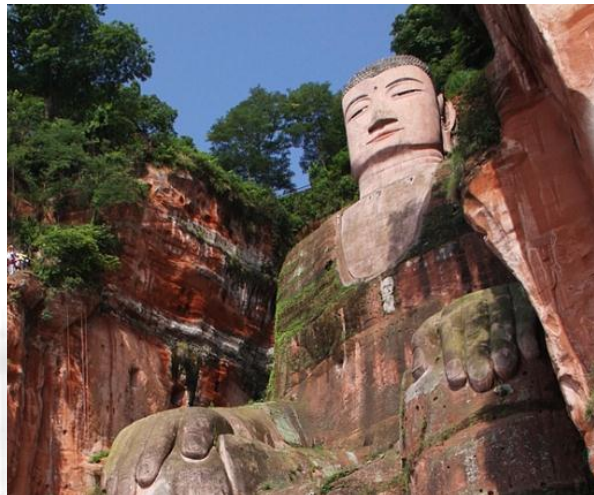
As a wonder in the world's history of civilization, the Dujiangyan Irrigation Project is known at home and abroad. The project, which has benefited the people for more than 2000 years, has the functions of irrigation, flood prevention, aquatic products cultivation, power generation and tourism. On November 29th, 2000, Dujiangyan was listed on the world cultural heritages list by UNESCO.



# Local Attraction

## Emei Mountain

Emei Mountain is one of the four most sacred Buddhist sites. It is blessed with a sea of clouds, picturesque sunrises, Buddha Rays, Saint Lamps. In 1996, it was ranked in “the world Cultural & Natural Heritage” by UNESCO.



**佛** Buddhism

## Leshan Giant Buddha

Leshan Giant Buddha is a 233-foot tall stone statue, built during the Tang Dynasty which has been well preserved for over 1200 years. It is the largest stone Buddha in the world and it is by far the tallest pre-modern statue in the world.

# Local Attraction



## Xiling Snow Mountain

Xiling Snow Mountain, reputed as China's very best ski resort, is a mountain range with several peaks and valleys. Much more than just a ski resort, it is suitable for traveling in all seasons.

## Jiuzhai Valley

Jiuzhai Valley is known for its many multi-level waterfalls, colorful lakes, and snow-capped peaks. It is under the well-known World Heritage List, has also been voted as one of the most beautiful places in China.





# Local Attraction



## Travel to Tibet

10 flights (2 hours) to Lhasa daily.  
Flights to Tibet all go through Chengdu.

A big feast of breathtaking scenery along the railway, especially along the Qinghai-Tibet Railway, the world's highest railway.

Many Tibetans live in Chengdu Wuhouci-Hengjie, where you can touch the Tibetan culture.



# Local Attraction



# Local Attraction



DHGate.com  
Fashion Trading Marketplace

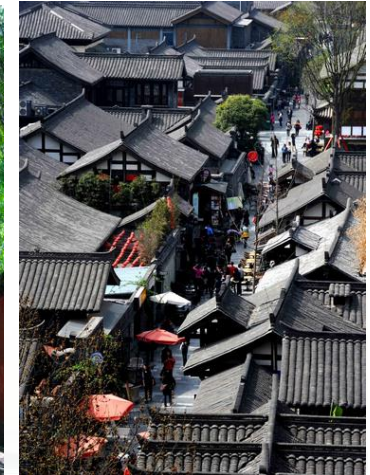
## 川剧 Sichuan Opera

The Magic Face-changing Stunt  
The Marvelous Chinese Traditional Opera

A photograph of a Sichuan Opera performer in a highly ornate, colorful costume. The performer is wearing a large, elaborate headdress with red and white floral decorations. They are performing a face-changing stunt, with a large, glowing flame or fire effect in the foreground. The background is dark, making the performer and the flame stand out.

# *Suggested Timetable*

<b>Special Session Proposal Submission:</b>	November 26, 2015
<b>Paper Submission:</b>	January 8, 2016
<b>Notification of Acceptance:</b>	February 25, 2016
<b>Final Paper Submission:</b>	March 25, 2016
<b>Advanced Registration:</b>	April 1, 2016
<b>Conference Dates:</b>	June 19-22, 2016



# Preliminary Schedule

	Sunday	Monday	Tuesday	Wednesday
<b>8:15</b>		Opening Remarks		
<b>8:30</b>		Plenary Talk 1	Plenary Talk 4	Plenary Talk 7
<b>9:20</b>		Plenary Talk 2	Plenary Talk 5	Plenary Talk 8
<b>10:00</b>		Coffee Break	Coffee Break	Coffee Break
<b>10:20</b>		3 Parallel Sessions*	3 Parallel Sessions	3 Parallel Sessions
<b>12:10</b>		Lunch	Lunch	Lunch
<b>14:30</b>		Plenary Talk 3	Plenary Talk 6	
<b>15:10</b>		Coffee Break	Coffee Break	Coffee Break
<b>15:30</b>		3 Parallel Sessions	3 Parallel Sessions	
<b>18:30</b>	Welcome Reception		Banquet	

\* 2 Lecture Sessions + 1 Poster Session

# Rough Budget

	Description	CNY	USD
<b>Income</b>	Registration Fees	742500	118800
	Publication Sales	2400	384
	<b>TOTAL</b>	<b>744900</b>	<b>119184</b>
<b>Expenses</b>	Promotion	1500	240
	Publications	24500	3920
	Professional Services	75227	11200
	Meeting Space Rental	150000	24000
	Conference Services	14500	2320
	Social Functions	295200	47232
	Others	42631	6821
	<b>TOTAL</b>	<b>603558</b>	<b>96569</b>
<b>Surplus</b>	<b>23.42%</b>	<b>141342</b>	<b>22615</b>

\* Expected attendance: 280+

# Anticipating Sponsors



国家自然科学基金  
基金委员会  
National Natural Science  
Foundation of China



电子科技大学  
University of Electronic Science and Technology of China



四川大学  
SICHUAN UNIVERSITY



IEEE  
CHENGDU SECTION

- Best Paper Award
- Student Travel Grant

*Welcome to Chengdu,  
A city you will never want to leave.*

Chengdu  
China  
中国·成都

